

NASPA ZYZZYVA INSTALLATION GUIDE

You will need:

- A Windows based PC
- Internet Access to claim licenses
 - If you need to claim licenses on a PC without internet access, contact info@scrabbleplayers.org
- Your NASPA Member ID and Password
 - If you need this information, find it on the NASPA website: <http://scrabbleplayers.org/cgi-bin/services.pl>
 - There is a “forgot password” option – you’ll need to input the email address that you provided when you signed up. If you aren’t sure what email you used, contact info@scrabbleplayers.org



DOWNLOAD & INSTALL

1. Download Install File from NASPA

- You will likely receive a warning that the file could be harmful to your computer. This has been a known issue with Zyzyva since past versions. You will need to bypass this and future warnings about the program.

2. Click through the set-up process, reading the terms of use and clicking “next” and “I agree” as needed.

3. Once the program has installed, click Finish.

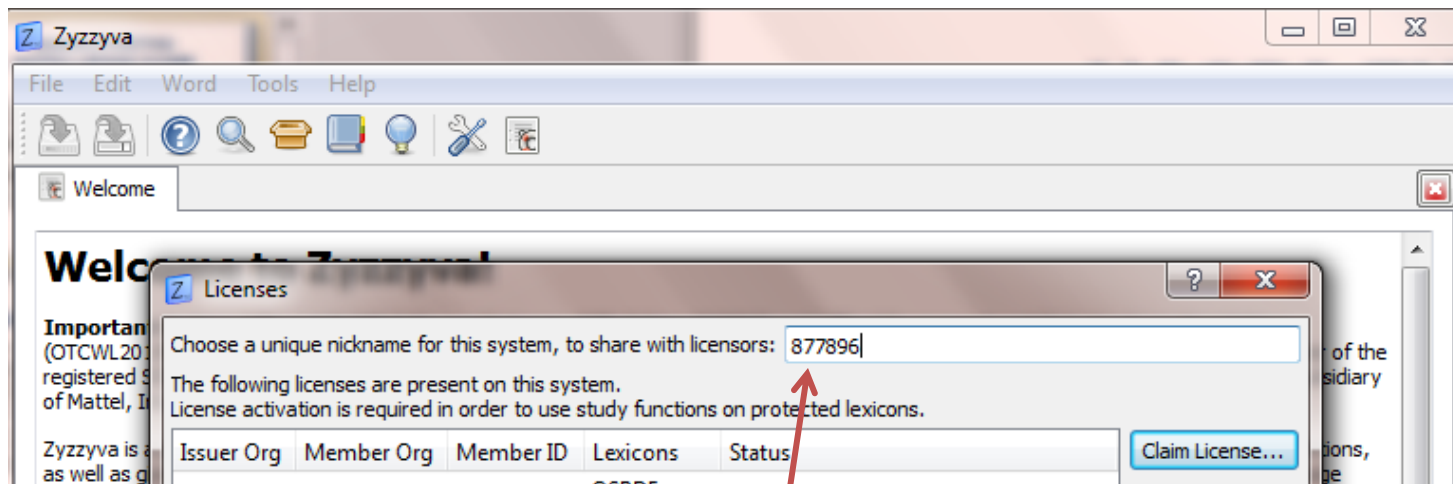
4. Read through the README file if you'd like.

5. The familiar Z icon with NASPA Zyzyva 3.0.3 should now be on your main screen



CLAIM LICENSE

1. Click the icon to open the program
2. If you are a first-time Zyzzyva user, you will be prompted to choose which lexicons to load. If you select a protected lexicon at this step, you may receive a “failed to load” message. Don’t worry – we’re about to go claim licenses so that your lexicon(s) will load...
3. Go to Tools → Manage Licenses. A pop-up box appears.

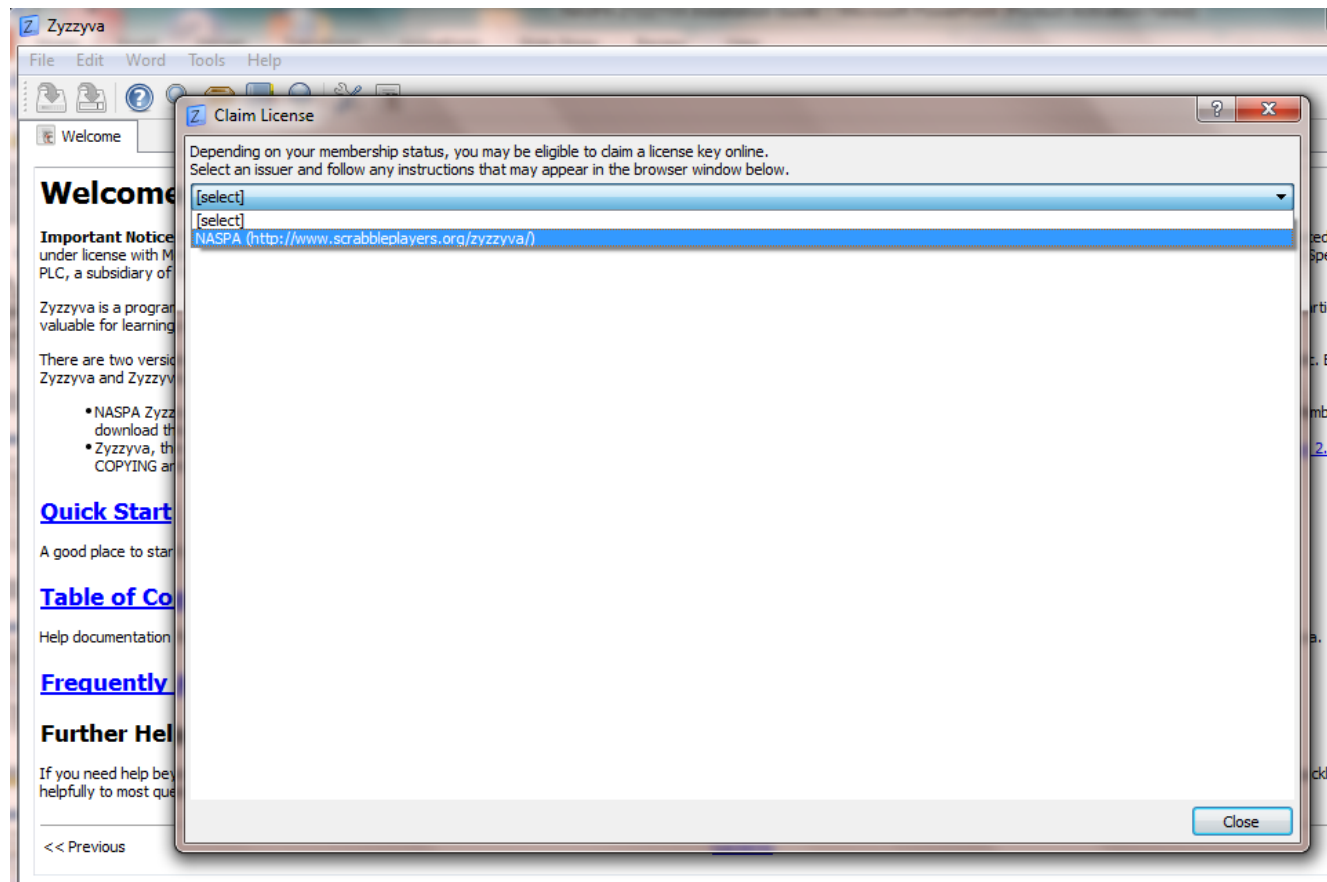


*Note: Leaving the nickname as assigned is fine. If you choose to change it, use only letters and digits.



CLAIM LICENSE

4. Click “Claim Licenses” button.
5. In the drop-down menu, select “NASPA” (currently the only option).

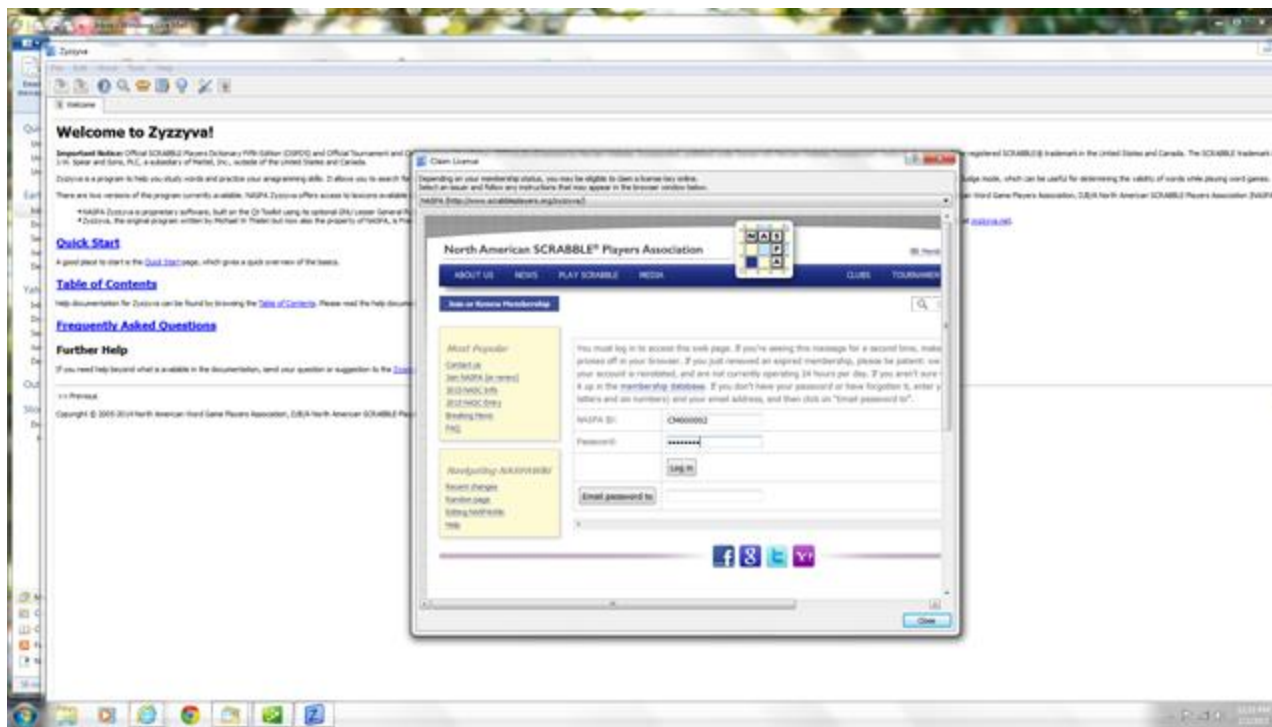




CLAIM LICENSE

6. This will prompt you to enter your member ID and password.

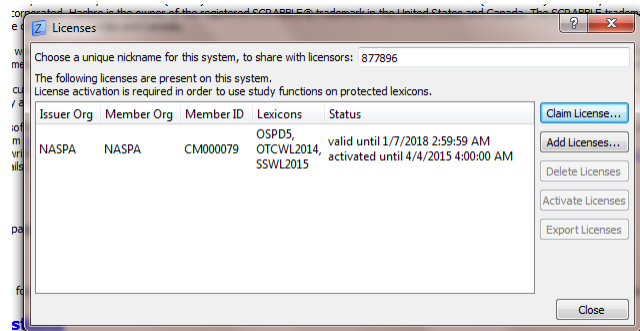
→ There may be a slight delay as the program communicates with the NASPA website. You'll see a "busy" cursor as the page loads.





CLAIM LICENSE

7. A pop-up box should appear saying “A license has been received from issuer ‘NASPA’” – click OK
8. Followed by “An activation certificate has been received from issuer ‘NASPA’”– click OK
9. Your license now appears in the Licenses box.



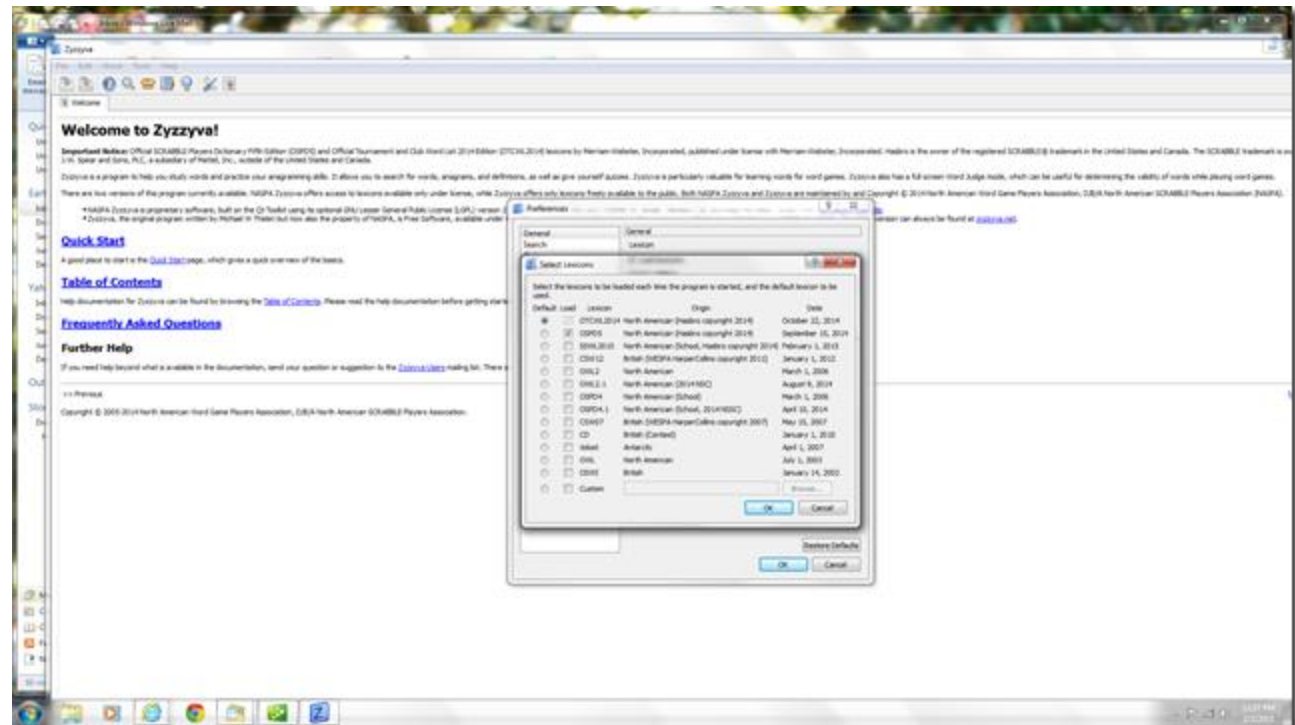
→ Your reactivation date/time is shown – after this date, you will be reminded to reactivate Zyzyva in order to continue using the program.

You are now ready to load the new lexicons.



LOAD LEXICONS

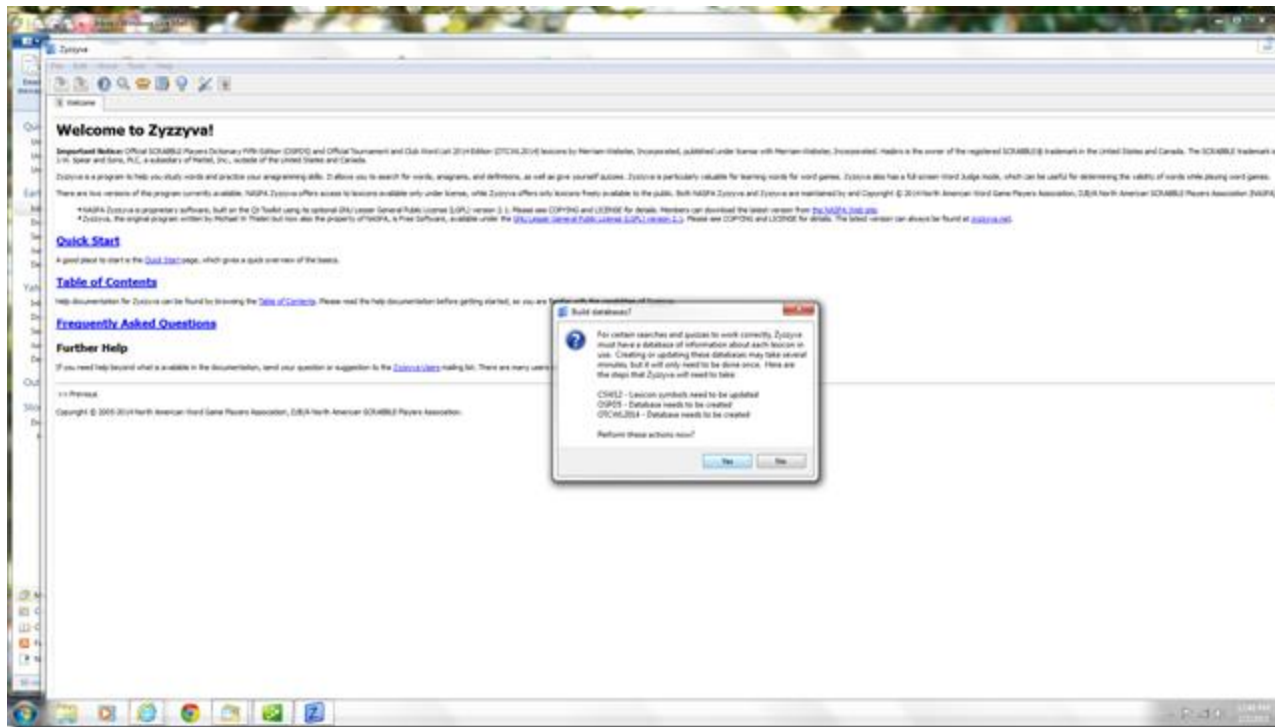
1. In the Zyzyva Menu, go to Edit → Preferences.
2. This opens a pop-up box with the option to Load Lexicons. Click “Edit...” next to this option.
3. This opens another pop-up box with a list of Lexicons to choose from. Select your desired lexicons and click OK (OTCWL 2014 is the new tournament list).





LOAD LEXICONS

4. This should prompt a box that asks you to build the databases. Click Yes.
→ If the box does not pop up, try closing Zyzyva and opening it again.

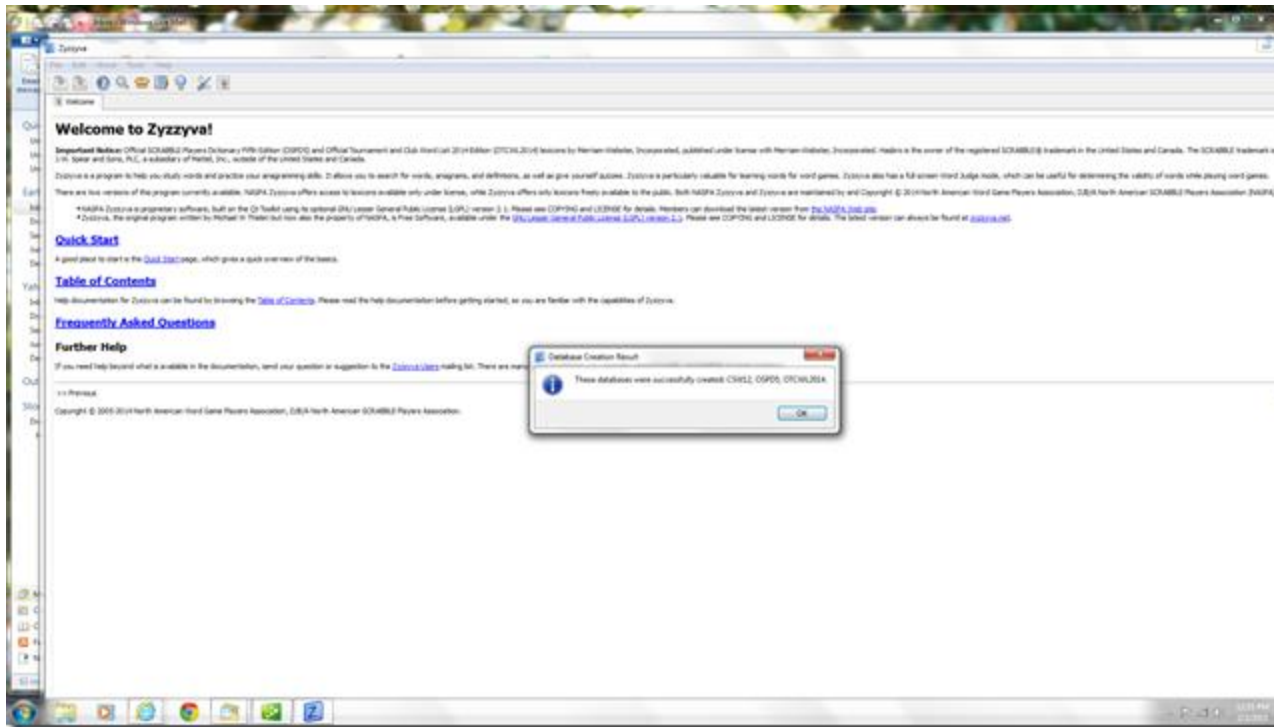


Depending on how many lexicons you selected, database building may take awhile. You'll only have to do this once.



LOAD LEXICONS

Once databases are created, you will receive a “Success” pop-up box. You’re ready to go!



CHALLENGER:
How many words would you like to challenge?



Zyzyva Word Judge
Version 3.0.3



Lexicon: OTCWL2014
October 22, 2014



YES, the play is **ACCEPTABLE**

RACINOS

Lexicon: OTCWL2014



TROUBLESHOOTING

If you have any difficulty with the installation process, please post to the Zyzyva yahoo group:

<https://groups.yahoo.com/neo/groups/zyzyva-users>

Or to the Zyzyva Facebook page:

<https://www.facebook.com/ZyzyvaApp>

We will generate a user FAQ on the NASPA webpage as well:

<http://www.scrabbleplayers.org/w/Zyzyva>

Advisory Board and Technology Committee members will be available to assist, and to collect reports of bugs.

3 February 2015